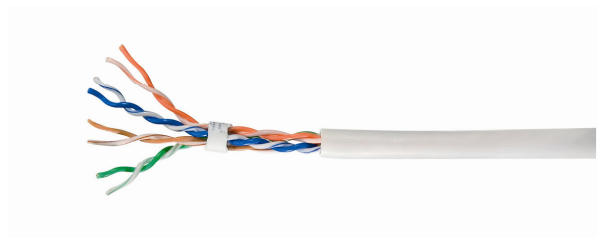


## Cat.5e U/UTP Patch Cord



The equip<sup>®</sup> Cat.5e U/UTP Patch Cord is the most ideal choice for you to deploy an Ethernet networking system. Composed of high-quality materials and fully-examined to meet the industrial standards, the patch cord is able to carry ultrahigh and error-free signals in the most demanding network environments.

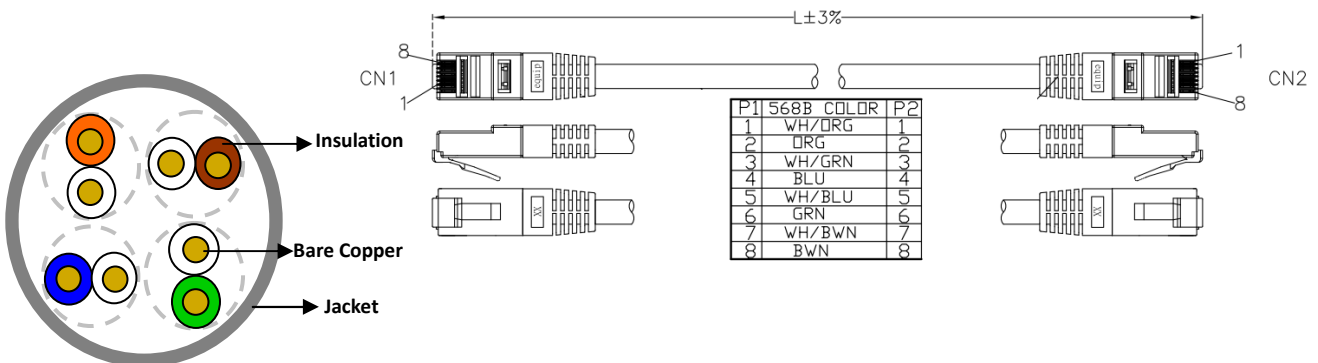
### | Key Feature

- 26AWG
- 100MHz
- Stranded
- Unshielded
- Gold plated pins
- Molded boot
- Cable length printed on plug
- UL/CUL, ETL, TIA/EIA certified

### | Typical Applications

- IEEE 802.3: 10Base-T; 100Base-T; 1000Base-T
- IEEE 802.5 16 MB; ISDN; TPDDI; ATM

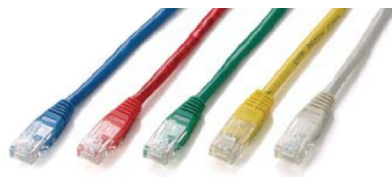
### | Structure



## | Specification

<b>Conductor</b>	Material	Bare Copper
	Construction	26AWG, 7/0.16 ± 0.015mm
<b>Insulation</b>	Thickness	MIN at any point: 0.14 mm / MAX AVG:0.16 mm
	Diameter	0.75 ± 0.01mm
	Colors	Blue-White/Blue, Orange-White/Orange, Green-White/Green, Brown-White/Brown
<b>Jacket</b>	Material	PVC
	Thickness	MIN at any point: 0.58mm / MAX AVG: 0.62mm
	Diameter	4.9 ± 0.3mm
	Marking	equip CAT5E U/UTP PATCH CABLE E213738 CM (UL) C(UL) 4PR 26AWG ISO/IEC 11801 & EN 50288 & TIA/EIA-568-B.2 ETL VERIFIED
<b>Connector</b>	RJ45 Plug	8P8C, Two Fork 3u" Gold

## | Ordering Information



	beige	red	blue	green	yellow
0.25m	805413	805423	805433	805443	805463
0.5m	805417	805427	805437	805447	805467
1m	805410	805420	805430	805440	805460
2m	805411	805421	805431	805441	805461
3m	805412	805422	805432	805442	805462
5m	805414	805424	805434	805444	805464
7.5m	805415	805425	805435	805445	805465
10m	805416	805426	805436	805446	805466
15m	805418				
20m	805419	805429	805439	805449	805469

**Warranty** : 5 years

**Packing**: equip zip bag