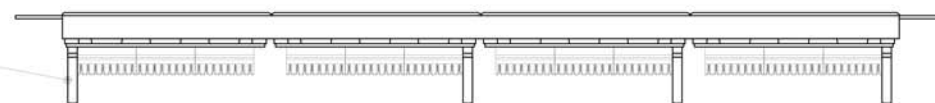


IDC
110 & Krone tool compatible



RJ45
TOP ENTRY JACK



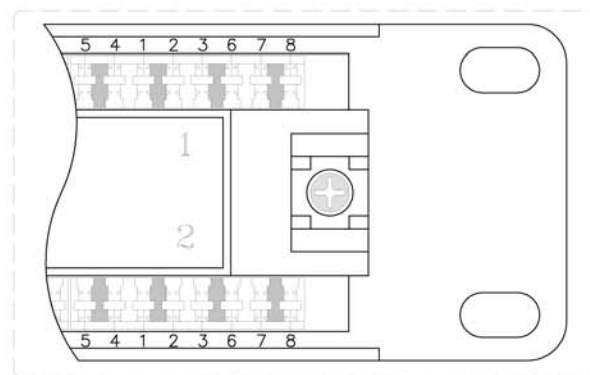
Specification:

Material :

1. Panel : 1.6 mm SPCC with Black color painting.
2. RJ45 Housing : PBT, UL 94V-0.
3. RJ45 Contact material & finished :
 - 3-1. Phosphor Bronze with 50-60 micro-inch Nickel plated.
 - 3-2. Contact area : Min. 3 mm 50 micro-inch Gold plated.
4. IDC Housing : PC, UL 94V-2.
5. IDC Terminal material & finished :
 - 5-1. Phosphor Bronze with 50 micro-inch Tin-Lead plated over 50-60 micro-inch Nickel plated.
 - 5-2. 110 & Krone tool compatible.
 - 5-3. Use for 22-26 AWG stranded and solid wire.
6. Jack Bracket Set : ABS UL 94V-0, Black color.
7. Cable Holder : Nylon 66, UL 94V-0.

Performance :

- a. The IDC color codes combine two wirings of T568A & T568B.
- b. Insertion Force : 900 gms for 8 contacts.
- c. Retention Strength : 7.7 kgs between Jack and Plug.
- d. Operation Temperature : -40°C to 80°C.
- e. Durability :
 - e-1. Jack : 750 cycles Plug-Jack mating and unmating test, Insertion cycles at 20 cycles/minute max. Contact resistance test per 100 cycles.
 - e-2. IDC : Max. 200 punching times.
- f. The Cat.5e performance is in compliance with the ANSI/TIA/EIA 568 B.2 standard.



GENERAL TOLERANCE OF DIMENSIONS

X.XXX	±0.005
X.XX	±0.05
X.X	±0.1



Cat.5e Patch Panel 48 Port UTP,
110/Krone Dual IDC, 2U, black